

MONTHLY MEMBERSHIP PROGRESS REPORT

LOCATION CALIFORNIA

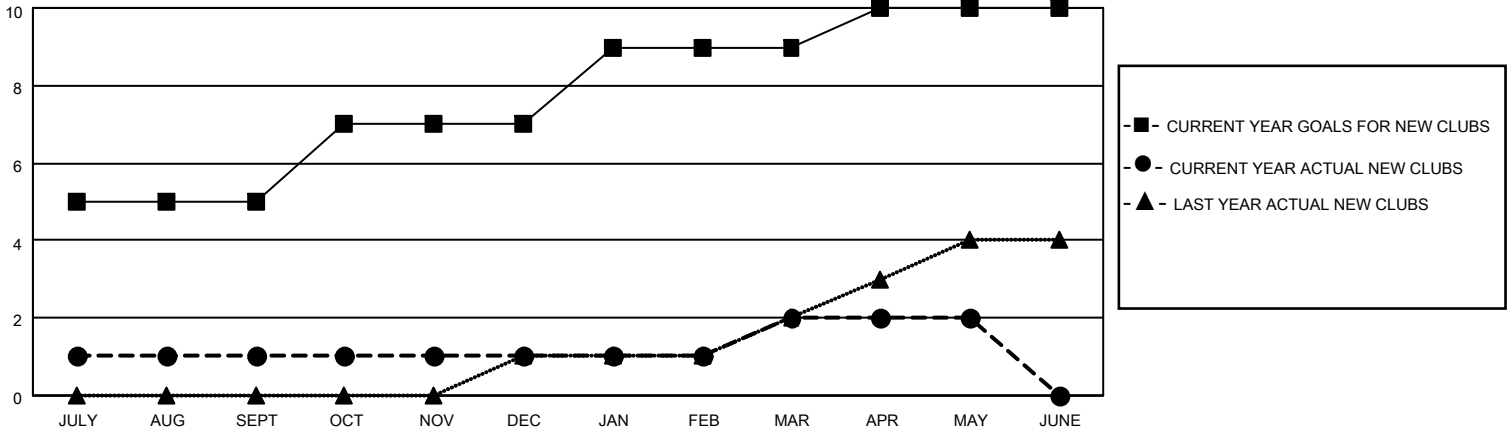
District 4 L2

Results as of: 5/31/2022

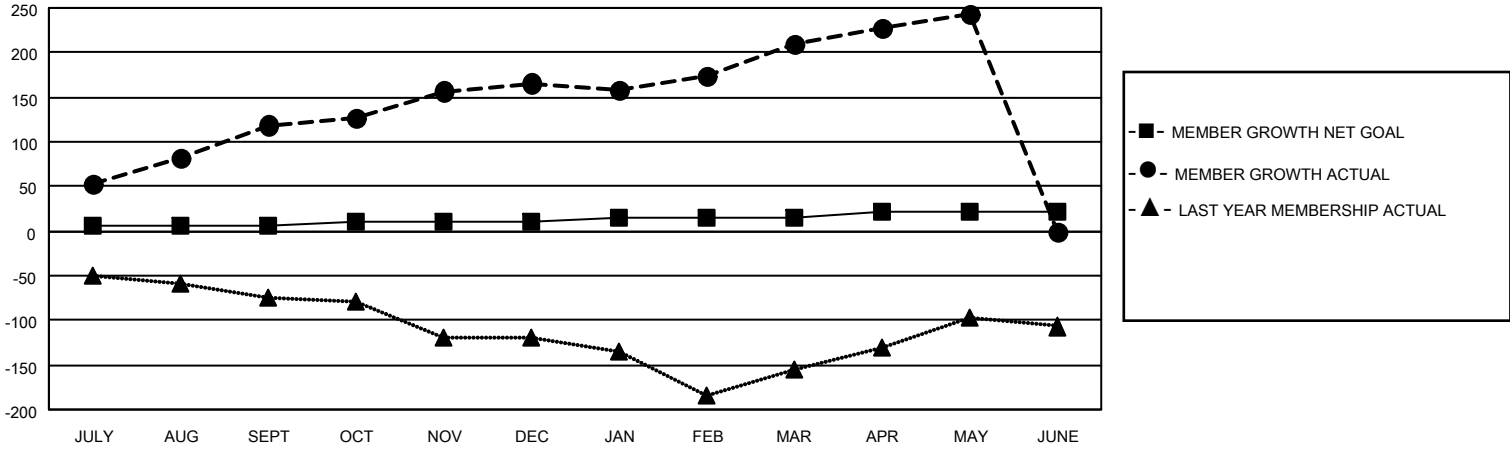
Clubs			
RESULTS FOR 2021-2022			
QUARTER	NEW CLUB GOAL	NEW CLUBS	DROPPED CLUBS
JULY/AUG/SEPT	5	1	1
OCT/NOV/DEC	2	0	0
JAN/FEB/MAR	2	1	0
APR/MAY/JUNE	1	0	0

Members			
RESULTS FOR 2021-2022			
QUARTER	MEMBER GROWTH NET GOAL	MEMBER GROWTH ACTUAL	DROPPED MEMBERS ACTUAL (including transfers)
JULY/AUG/SEPT	5	227	82
OCT/NOV/DEC	5	88	36
JAN/FEB/MAR	5	81	35
APR/MAY/JUNE	6	61	27

GOALS AND ACTUAL NEW CLUBS CUMULATIVE



GOALS AND ACTUAL MEMBERS CUMULATIVE



DROPPED CLUBS: 1

32 CLUBS OF 53 ADDED 1 OR MORE NEW MEMBERS

GENDER DISTRIBUTION

MALE	840 (52.83%)
FEMALE	748 (47.04%)
NON BINARY	1 (0.06%)
PREFER NOT TO ANSWER	1 (0.06%)

DROPPED MEMBERS

[CLICK HERE FOR CUMULATIVE MEMBERSHIP DATA](#)

DECEASED	16
CLUB CANCELLED	11
OTHER	153
TOTAL	180

TOTAL FAMILY UNIT MEMBERS 194

FAMILY MEMBERS PAYING HALF DUES 108